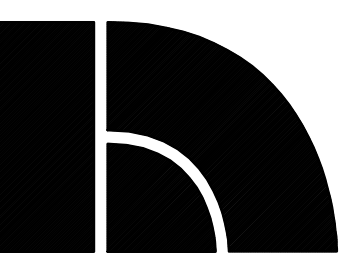


FROELICH ENGINEERS
 Portland (503) 624-7006
 Bend (541) 383-1828
 Froelich-Engineers.com
 Job # 11-B059A



**EXPANSION & REMODEL FOR...
 LITHIA HONDA OF BEND
 2225 NE HIGHWAY 20
 BEND, OREGON**

NEAL HUSTON & ASSOCIATES ARCHITECTS INC.



520 SW Powerhouse Dr.
 Suite 821
 Bend, Oregon 97702
 541.389.0991
 FAX 541.389.1344
 info@nealhuston.com
 www.nealhuston.com

Copyright © 2012 by
 Neal Huston & Associates Architects Inc.

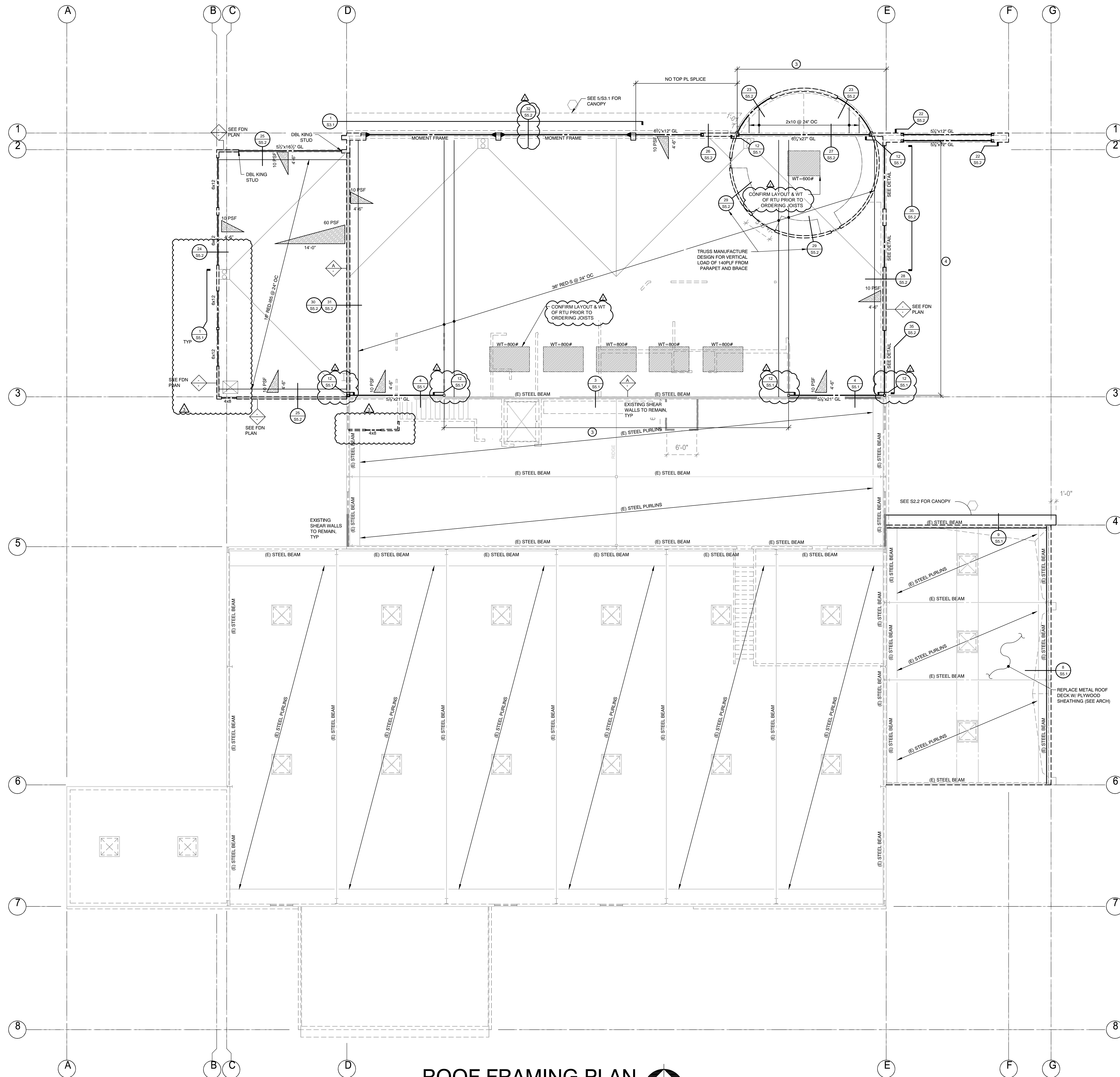
REVISIONS	
DATE	DESCRIPTION
1 4/26/13	CITY CORRECTIONS
2 5/13/13	ADDENDUM #1
3 7/05/13	CONF./TRAIN'G RM.
4	
5	
6	

DRAWINGS:
**STRUCTURAL
 ROOF FRAMING
 PLAN**

PROJECT #: 11-B059A
 CAD FILE:
 SCALE: AS NOTED
 DATE: 11/16/2012
 DRAWN BY: MP / MF

S2.3

CONSTRUCTION SET:
 06/11/13



ROOF FRAMING PLAN
 1/8" = 1'-0"